

# RADIAL-TAPING SPECIFICATIONS FOR RECTIFIERS-J TAPING

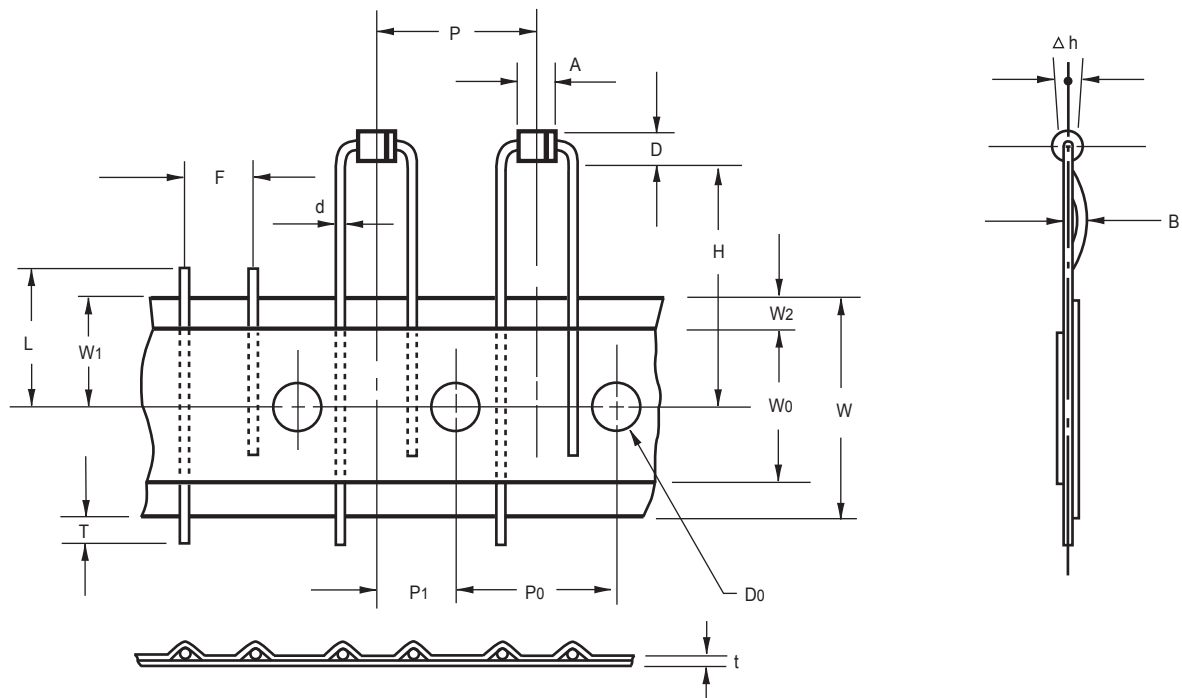


Fig.: Configuration of J-TAPING

ITEM	SYMBOL	SPECIFICATIONS(mm)	SPECIFICATIONS(inch)
Body diameter	D	2.5 ± 0.2	0.098 ± 0.008
Body height	A	3.1 ± 0.3	0.122 ± 0.012
Lead-wire diameter	d	0.6 ± 0.1	0.024 ± 0.004
Component pitch	P	12.7 ± 1.0	0.500 ± 0.039
Feed hole pitch	P0	12.7 ± 1.0	0.500 ± 0.039
Component lead spacing	F	5.0 ± 0.8	0.197 ± 0.032
Deflection	Δ h	0.0 ± 2.0	0.000 ± 0.079
Tape width	W	18.0+1.0/-0.5	0.709+0.039/-0.020
Hold-down tape width	W0	12.5 Min.	0.492 Min.
Hold-position	W1	9.0+0.7/-0.50	0.354+0.028/-0.020
Length from seating plane	H	20.0 ± 0.5	0.787 ± 0.020
Feed hole diameter	D0	4.0 ± 0.3	0.157 ± 0.012
Overall tape thickness	t	0.7 ± 0.2	0.028 ± 0.008
Cut out length	L	11.0 Max.	0.433 Max.
Lead protrusion	T	1.0 Max.	0.039 Max.
Center of seating plane location	P1	6.35 ± 0.7	0.250 ± 0.028
Adhesive tape border	W2	30 Max.	1.181 Max.
Lead bend	B	1.0 Max.	0.039 Max.

- Notes :
- 1.Devices are packed in accordance with EIA standard RS-468 and specification given above. Available only for R-1 product utilizing 0.6mm diameter leads.
  - 2.Maximum cumulative pitch tolerance:1.0mm/20pitch.
  - 3.Standard packing code is "J".